

EMC VERIFICATION SUMMARY

Report No.: SZHH01168197-003

Toy

ITE

Others

Model: 0803 Additional Models: 0801 to 0899 INCLUSIVE, 0804, 0804W, 0805, 0806, 0807, 0808, 0809, 0811, 0811W, 0812, 0813, 0814, 0815, 0816, 0817, 0817	Applicant: HOBBY ENGINE MODEL LTD. ROOM 619, 6/F. PENINSULA CENTER, 67 MODY ROAD, TSIM SHA TSUI, HONG KONG		
Product Description: Excavator	Sample Receipt Date: 24 June 2017 Test Conducted Date: 24 June 2017 to 28 July 2017		
<input checked="" type="checkbox"/> 1 st TEST <input type="checkbox"/> 2 nd TEST	ALL TESTS WERE CONDUCTED IN ACCORDANCE WITH: *EN 55014-1: 2006 + A1: 2009 + A2: 2011 *EN 55014-2: 1997 + A1: 2001 + A2: 2008 *EN 61000-3-2: 2014 *EN 61000-3-3: 2013		
Test Site and Location:	Intertek Testing Services Shenzhen Ltd. Longhua Branch 1F/2F, Building B, QiaoAn Scientific Technology Park, ShangKeng Community, GuanHu Subdistrict, LongHua District, ShenZhen. P.R. China, 518110		
Test Result	OK	Not OK	Remark(See page 2)
*EN 55014-1: 2006 + A1: 2009 + A2: 2011	<input checked="" type="checkbox"/>	<input type="checkbox"/>	<input type="checkbox"/>
*EN 55014-2: 1997 + A1: 2001 + A2: 2008	<input checked="" type="checkbox"/>	<input type="checkbox"/>	<input type="checkbox"/>
*EN 61000-3-2: 2014	<input checked="" type="checkbox"/>	<input type="checkbox"/>	<input checked="" type="checkbox"/>
*EN 61000-3-3: 2013	<input checked="" type="checkbox"/>	<input type="checkbox"/>	<input type="checkbox"/>
Remark: When determining the test conclusion, the Measurement Uncertainty of test has been considered.			

Prepared and checked by:

Approved By:

Sign On File
Abel Zhou
Senior Engineer
Intertek

Jimmy Wen
Assistant Supervisor
Intertek
Date: 28 July 2017

- This summary is part of the full report and should be read in conjunction with it.
- This report is for the exclusive use of Intertek's Client and is provided pursuant to the agreement between Intertek and its Client. Intertek's responsibility and liability are limited to the terms and conditions of the agreement. Intertek assumes no liability to any party, other than to the Client in accordance with the agreement, for any loss, expense or damage occasioned by the use of this report. Only the Client is authorized to copy or distribute this report. Any use of the Intertek name or one of its marks for the sale or advertisement of the tested material, product or service must first be approved in writing by Intertek. The observations and test results referenced from this report are relevant only to the sample tested. This report by itself does not imply that the material, product, or service is or has ever been under an Intertek certification program.
- The test report only allows to be revised only within the report defined retention period unless further standard or the requirement was noticed

TRF No.: EN55014-1/-2_b

1 of 31



EMC Results Conclusion (with Justification)

RE: EMC Testing Pursuant to EMC Directive 2014/30/EU, Performed On the
Excavator,
Model: 0803

We tested the Excavator, Model: 0803, to determine if it was in compliance with the relevant EN standards as marked on the EMC Verification Summary. We found that the unit met the requirement of EN 55014-1, EN55014-2, EN 61000-3-2, EN 61000-3-3 standards when tested as received.

The additional models: 0801 to 0899 INCLUSIVE, 0804, 0804W, 0805, 0806, 0807, 0808, 0809, 0811, 0811W, 0812, 0813, 0814,0815, 0816, 0817,0817 are the same as the Model: 0803 in hardware aspect. The difference in model number and appearance serves as marketing strategy.

The production units are required to conform to the initial sample as received when the units are placed on the market.

Remark: Standards against which no testing has been conducted of the captioned model and the engineering judgement is stated as follows:

EN61000-3-2: This product has power consumption 75W or less under normal operating conditions. It is therefore not likely to produce harmonics above the limits of the standard. The product is deemed to comply with the standard without any measurements.

LABORATORY MEASUREMENTS**Configuration Information**

Equipment Under Test (EUT):	Excavator
Model:	0803
Serial No.:	N/A
Support Equipment:	N/A
Cables:	N/A
Adaptor:	Model: GQ07-090020-AG Input: AC 100-240V 50-60Hz 0.3A Output: DC 9.0V 0.2A (Provided by Client)
Rated Voltage:	DC 7.2V (1 x 7.2V Rechargeable Battery)

TRF No.: EN55014-1/2_b

Performance Criteria for Immunity

The performance criteria are referred to the test standard: EN 55014-2

Performance criteria A

During and after the test the EUT shall continue to operate as intended without operator intervention. No degradation of performance or loss of function is allowed below a minimum performance level specified by the manufacturer when the EUT is used as intended. The performance level may be replaced by a permissible loss of performance. If the minimum performance level or the permissible performance loss is not specified by the manufacturer, then either of these may be derived from the product description and documentation, and by what the user may reasonably expect from the EUT if used as intended.

Performance criteria B

After the test, the EUT shall continue to operate as intended without operator intervention. No degradation of performance or loss of function is allowed, after the application of the phenomena below a performance level specified by the manufacturer, when the EUT is used as intended. The performance level may be replaced by a permissible loss of performance.

During the test, degradation of performance is allowed. However, no change of operating state or stored data is allowed to persist after the test.

If the minimum performance level (or the permissible performance loss) is not specified by the manufacturer, then either of these may be derived from the product description and documentation, and by what the user may reasonably expect from the EUT if used as intended.

Performance criteria C

During and after testing, a temporary loss of function is allowed, provided the function is selfrecoverable, or can be restored by the operation of the controls or cycling of the power to the EUT by the user in accordance with the manufacturer's instructions.

TRF No.: EN55014-1/2_b

Applicant: HOBBY ENGINE MODEL LTD.

Model: 0803

Worst Case Operating Mode: Charging

EN 55014-1 Radiated Scan

Used Test Equipment

Equipment No.	Equipment	Manufacturer	Model No.	Cal. Date	Due Date
SZ185-01	EMI Receiver	R & S	ESCI	9-Feb-17	9-Feb-18
SZ061-03	Biconilog Antenna	ETS	3142C	12-Oct-16	12-Oct-17
SZ188-01	Anechoic Chamber	ETS	RFD-F/A-100	16-Jan-17	16-Jan-19

- Notes:
1. Peak detector quick scan is showed on the graph and final quasi-peak detector data is measured corresponding to relevant limit and recorded in the data table.
 2. Frequency range scanned: 30MHz to 1000MHz.
 3. Only emissions significantly above equipment noise floor are reported.
 4. Uncertainty: $\pm 4.8\text{dB}$ at a level of confidence of 95%.
 5. Negative sign (-) in the margin column signify levels below the limit.

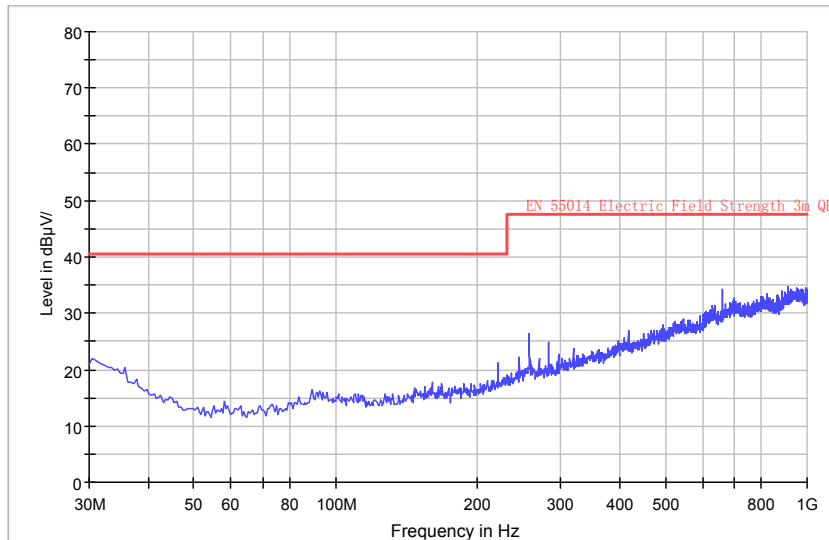
TRF No.: EN55014-1/2_b

Applicant: HOBBY ENGINE MODEL LTD.

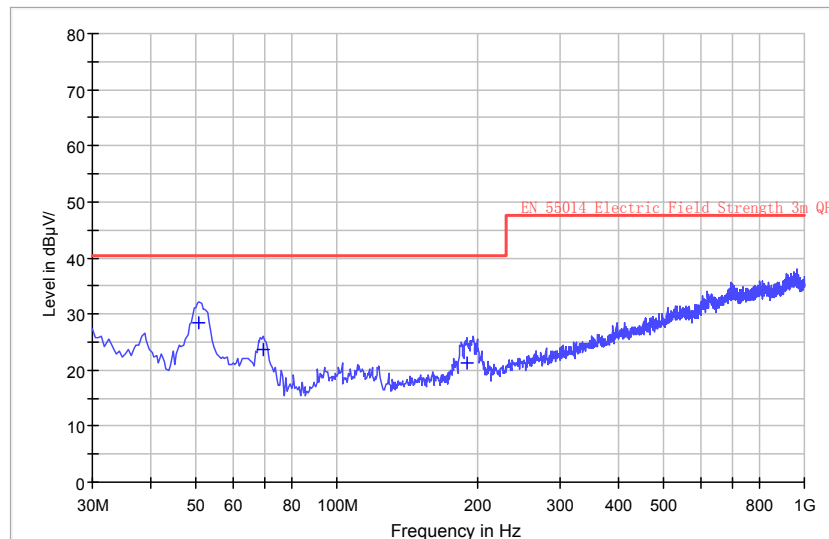
Model: 0803

Worst Case Operating Mode: Charging

Graphic Radiated Emissions Pursuant to EN55014-1: Emissions Requirement Horizontal



Vertical



TRF No.: EN55014-1/2_b

Applicant: HOBBY ENGINE MODEL LTD.
 Model: 0803
 Worst Case Operating Mode: Charging

Data Table

Radiated Emissions Pursuant to EN55014-1: Emissions Requirement

Polarization	Frequency (MHz)	Net at 3m (dBµV/m)	Calculated Net at 10m (dBµV/m)	Limit at 10m (dBµV/m)	Margin (dB)
V	50.850	28.5	18.0	30.0	-12.0
V	69.770	23.6	13.1	30.0	-16.9
V	189.565	21.3	10.8	30.0	-19.2

No emissions significantly above equipment noise floor.



Applicant: HOBBY ENGINE MODEL LTD.
Model: 0803
Worst Case Operating Mode: Charging

EN55014-1 RFI Voltage Test

Used Test Equipment

Equipment No.	Equipment	Manufacturer	Model No.	Cal. Date	Due Date
SZ187-01	LISN	R & S	ENV216	1-Nov-16	1-Nov-17
SZ187-02	LISN	R & S	ENV216	1-Jul-17	1-Jul-18
SZ185-02	EMI Test Receiver	R&S	ESCI	1-Nov-16	1-Nov-17
SZ188-03	Shielding Room	ETS	RFD-100	16-Jan-17	16-Jan-19

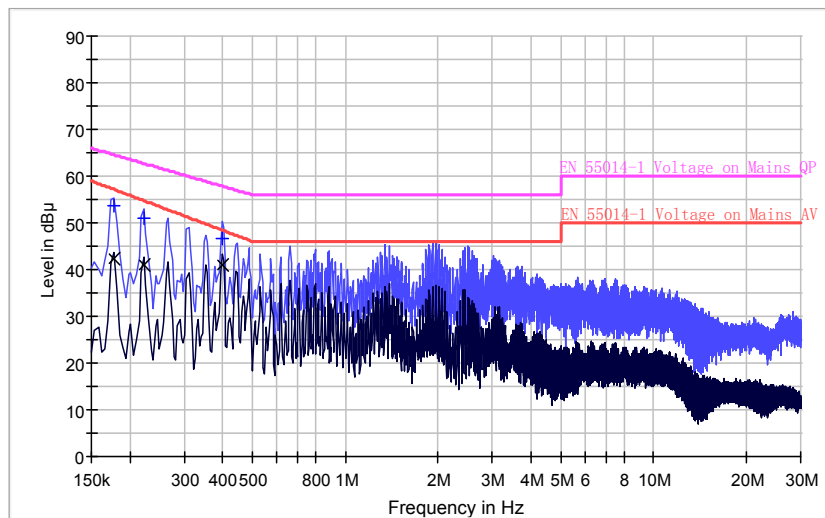
- Notes:
1. Peak and average detector quick scan are showed on the graph and final quasi-peak and average detector data are measured, the worst-case is recorded in the following graph and table.
 2. Frequency range scanned: 150kHz to 30MHz.
 3. Only emissions significantly above equipment noise floor are reported.
 4. Uncertainty: ± 3.6 dB at a level of confidence of 95%.

TRF No.: EN55014-1/2_b

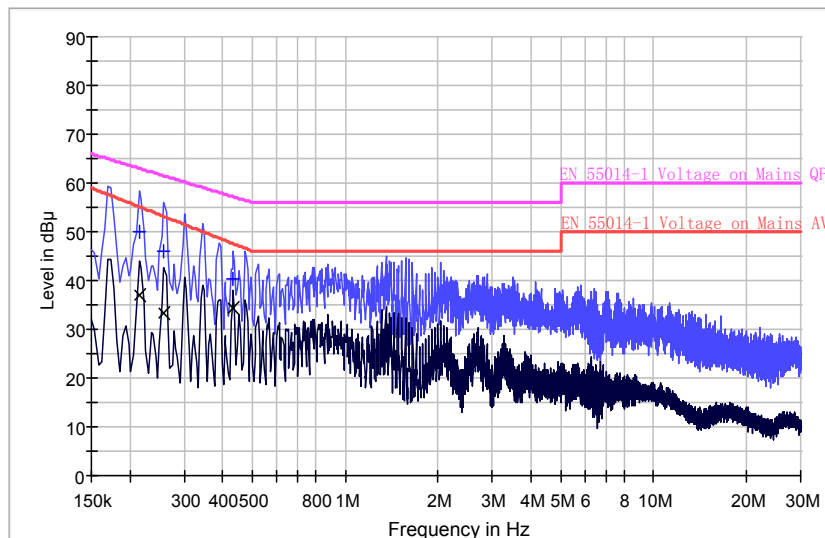
Applicant: HOBBY ENGINE MODEL LTD.
Model: 0803
Worst Case Operating Mode: Charging
Phase: Live / Neutral

Graphic RFI Voltage Test Pursuant to EN 55014-1: Emissions Requirement

Live Line



Neutral Line



TRF No.: EN55014-1/2_b

Applicant: HOBBY ENGINE MODEL LTD.
 Model: 0803
 Worst Case Operating Mode: Charging
 Phase: Live / Neutral

Data Table

RFI Voltage Test Pursuant to EN 55014-1: Emissions Requirement

Live Line

Frequency (MHz)	Quasi-Peak		Average	
	Disturbance level dB(μV)	Permitted limit dB(μV)	Disturbance level dB(μV)	Permitted limit dB(μV)
0.178000	53.6	64.6	42.2	57.2
0.222000	50.9	62.7	41.1	54.8
0.398000	46.8	57.9	41.0	48.5

No emissions significantly above equipment noise floor.

Neutral Line

Frequency (MHz)	Quasi-Peak		Average	
	Disturbance level dB(μV)	Permitted limit dB(μV)	Disturbance level dB(μV)	Permitted limit dB(μV)
0.214000	49.9	63.0	37.0	55.2
0.258000	46.0	61.5	33.5	53.1
0.434000	40.4	57.2	34.2	47.5

No emissions significantly above equipment noise floor.



Applicant: HOBBY ENGINE MODEL LTD.

Model: 0803

Worst Case Operating Mode: Charging

EN61000-3-3 Voltage Fluctuations

Used Test Equipment

Equip No.	Equipment	Manufacturer	Model No.	Cal. Date	Due Date
SZ064-01	Compliance Test System	California Instruments	5001iX-CTS-400	9-Feb-17	9-Feb-18
SZ064-01	Power Analyzer and Conditioning System	California Instruments	PACS-1	9-Feb-17	9-Feb-18

Notes: 1. The test result consisting of worst-case was attached in the following pages.

2. Uncertainty: 0.25% at a level of confidence of 95%.

TRF No.: EN55014-1/2_b

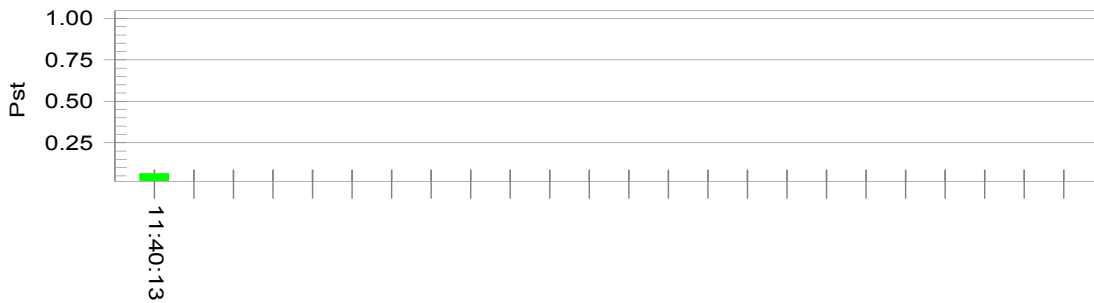


Applicant: HOBBY ENGINE MODEL LTD.
Model: 0803
Worst Case Operating Mode: Charging

Flicker Test Summary per EN/IEC61000-3-3 (Run time)

Pst_i and limit line

European Limits



Plt and limit line



Parameter values recorded during the test:

Vrms at the end of test (Volt):	230.26		
Highest dt (%):	0.00	Test limit (%):	3.30 Pass
Time(mS) > dt:	0.0	Test limit (mS):	500.0 Pass
Highest dc (%):	0.00	Test limit (%):	3.30 Pass
Highest dmax (%):	0.00	Test limit (%):	4.00 Pass
Highest Pst (10 min. period):	0.064	Test limit:	1.000 Pass

TRF No.: EN55014-1/2_b

12 of 25



EN61000-4-2 Electrostatic Discharge

Test Summary (Pursuant to EN55014-2)

Basic Standard:	IEC 61000-4-2: 1995 + A1: 1998 + A2: 2000
Port:	Enclosure
Required Performance Criterion:	B
Limit:	±8.0kV (Air Discharge)
	±4.0kV (Contact Discharge)
	±4.0kV (Indirect Contact Discharge)
Time Between Each Discharge:	1 second
Temperature:	27.3°C
Relative Humidity:	54.6%
Test Mode:	Charging
Test Setup:	Table-top
Test of Post-Installation:	N/A

Used Test Equipment

Equipment No.	Equipment	Manufacturer	Model No.	Cal. Date	Due Date
SZ189-03	ESD Simulator	Teseq	NSG 435	17-Nov-16	17-Nov-17

TRF No.: EN55014-1/2_b

13 of 25



Applicant: HOBBY ENGINE MODEL LTD.

Model: 0803

Test Results**EN61000-4-2****Electrostatic Discharge**

Discharge Type	No. of Discharge	Applied Voltage	Result (Pursuant to EN55014-2, Criterion B)
Contact Discharge	20	±4kV	OK
Air Discharge	20	±8kV	OK
Indirect HCP Discharge	20	±4kV	OK
Indirect VCP Discharge	20	±4kV	OK

 Additional Information No observable change

TRF No.: EN55014-1/2_b

14 of 25



Applicant: HOBBY ENGINE MODEL LTD.

Model: 0803

**EN61000-4-6
Injected Current (0.15MHz to 230MHz)**

Test Summary (Pursuant to EN55014-2)

Basic Standard:	IEC 61000-4-6: 2003 + A1: 2004 + A2: 2006
Port:	AC Power Lines, DC Power Lines, Signal Lines and Control Lines
Required Performance Criterion:	A
Limit:	3.0V (rms)
Test Modulation:	1kHz, 80% AM
Frequency:	0.15MHz to 230MHz
Dwell Time:	1s
Frequency Step:	1%
Temperature:	25°C
Relative Humidity:	48%
Coupling Factor of CDN:	-1.0dB ~ -1.7dB
Test Mode:	Charging
Test Setup:	Table-Top
Equipment Under Test (EUT):	Single Unit

Used Test Equipment

Equipment No.	Equipment	Manufacturer	Model No.	Cal. Date	Due Date
SZ180-02	Signal Generator	Aeroflex	2023A	31-Jan-16	31-Jul-17
SZ181-03	Amplifier	AR-WORLDWIDE	75A250	31-Jan-16	31-Jul-17
SZ181-03-01	Attenuator	AR-WORLDWIDE	6dB/50FH-006-100	31-Jan-16	31-Jul-17
SZ184-03	Coupling-Decoupling Network	Luthi	CDN L-801 M2/M3	31-Jan-16	31-Jul-17
SZ183-01	RF CURRENT-INJECTION CLAMP	LUTHI	EYW85820 001	31-Jan-16	31-Jul-17

TRF No.: EN55014-1/2_b

15 of 25



TRF No.: EN55014-1/2_b



Applicant: HOBBY ENGINE MODEL LTD.

Model: 0803

Test Results

EN61000-4-6

Injected Current (0.15MHz to 230MHz)

Port	Frequency (MHz)	Level	Result (Pursuant to EN55014-2, Criterion A)
AC Power Lines	0.15 to 230	3V (rms)	OK
DC Power Lines	0.15 to 230	1V (rms)	N/A
Signal Lines	0.15 to 230	1V (rms)	N/A
Control Lines	0.15 to 230	1V (rms)	N/A

Additional Information

No observable change

TRF No.: EN55014-1/2_b

Applicant: HOBBY ENGINE MODEL LTD.

Model: 0803

EN61000-4-4 Electrical Fast Transient / Burst

Test Summary (Pursuant to EN55014-2)

Basic Standard:	IEC 61000-4-4: 2004
Port:	AC Power Lines
Required Performance Criterion:	B
Limit:	±1.0kV
Temperature:	24°C
Relative Humidity:	53%
Test Duration:	1 minute
Test Mode:	Charging
Test Setup:	Table-top
Generator Drive:	Internal
Sequence of Application:	Multiple

Used Test Equipment

Equipment No.	Equipment	Manufacturer	Model No.	Cal. Date	Due Date
SZ063-01	Compact Immunity Tester	Haefely	ECOMPACT 4	9-Feb-17	9-Feb-18

TRF No.: EN55014-1/2_b

Applicant: HOBBY ENGINE MODEL LTD.
Model: 0803

Test Results

EN61000-4-4

Electrical Fast Transient / Burst

Port	Level	Polarity	Result (Pursuant to EN55014-2, Criterion B)
AC Power Lines	1kV	+	OK
	1kV	-	OK
DC Power Lines	0.5kV	+	N/A
	0.5kV	-	N/A
Signal Lines	0.5kV	+	N/A
	0.5kV	-	N/A
Control Lines	0.5kV	+	N/A
	0.5kV	-	N/A

Additional Information

No observable change

TRF No.: EN55014-1/2_b

19 of 25



Applicant: HOBBY ENGINE MODEL LTD.

Model: 0803

EN61000-4-5 Surge Immunity

Test Summary (Pursuant to EN55014-2)

Basic Standard:	IEC 61000-4-5: 2005		
Port:	AC Power Lines		
	Phase and Neutral	Phase and Earth	Neutral and Earth
Limit:	5 Positive and 5 Negative Surges		
	±1kV	±2kV	±2kV
Generator Impedance:	2ohm	12ohm	12ohm
Required Performance Criterion:	B		
Repetition Rate:	1 minute		
Temperature:	24°C		
Relative Humidity:	53%		
Test Mode:	Charging		
Test Setup:	Table-top		
Surge Generator Trigger:	Internal		
Installation Condition:	Class 3: Electrical environment where cables run in parallel.		
Phase Angle:	90°, 270°		

Used Test Equipment

Equip No.	Equipment	Manufacturer	Model No.	Cal. Date	Due Date
SZ063-01	Compact Immunity Tester	Haefely	ECOMPACT 4	9-Feb-17	9-Feb-18

TRF No.: EN55014-1/2_b

20 of 25



TRF No.: EN55014-1/2_b

Intertek Testing Services Shenzhen Limited
深圳天祥质量技术服务有限公司

301A,302B, 6/F Shekou Technology Main Bldg and Room
1E of Nanshan Building,Nanhai Ave., Nanshan Distirct,
Shenzhen China.
深圳市南山区南海大道科技大厦301A、302B、六
层、七层、南山大厦1楼1E房（518067）

Tel +86755 26020111
Fax +86755
26837118/9
www.intertek.com.cn
www.intertek.com

21 of 25



Applicant: HOBBY ENGINE MODEL LTD.
Model: 0803

Test Results

EN61000-4-5 Surge Immunity

Level	Result (Pursuant to EN55014-2, Criterion B)
Between Phase and Neutral: $\pm 1\text{kV}$	OK
Between Phase and Earth: $\pm 2\text{kV}$	N/A
Between Neutral and Earth: $\pm 2\text{kV}$	N/A

Additional Information

No observable change

TRF No.: EN55014-1/2_b

TRF No.: EN55014-1/2_b



Applicant: HOBBY ENGINE MODEL LTD.

Model: 0803

EN61000-4-11 Voltage Dips and Interruptions

Test Summary (Pursuant to EN55014-2)

Basic Standard	EN 61000-4-11: 2004			
Port:	A.C. Power Lines			
Limit:	Test level in %UT	Duration (Periods)		Required Performance Criterion
		50Hz	60Hz	
	0	0.5	0.5	C
	40	10	12	C
	70	25	30	C
No. of dips/interruptions:	3			
Test Mode:	Charging			
Test Setup:	Test generator causes the interference of the EUT AC mains			

U_T is the rated voltage for the equipment.

Used Test Equipment

Equip No.	Equipment	Manufacturer	Model No.	Cal. Date	Due Date
SZ063-01	Compact Immunity Tester	Haefely	ECOMPACT 4	9-Feb-17	9-Feb-18

TRF No.: EN55014-1/2_b

24 of 25



Applicant: HOBBY ENGINE MODEL LTD.

Model: 0803

Test Results**EN61000-4-11****Voltage Dips and Interruptions**

Test condition			Result (Pursuant to EN55014-2, Criterion C)
Test Level in %UT	Duration (Periods)		
	50Hz	60Hz	
0	0.5	0.5	OK
40	10	12	OK
70	25	30	OK

 Additional Information No observable change

TRF No.: EN55014-1/2_b

Applicant: HOBBY ENGINE MODEL LTD.
Model: 0803

External Photo



TRF No.: EN55014-1/2_b



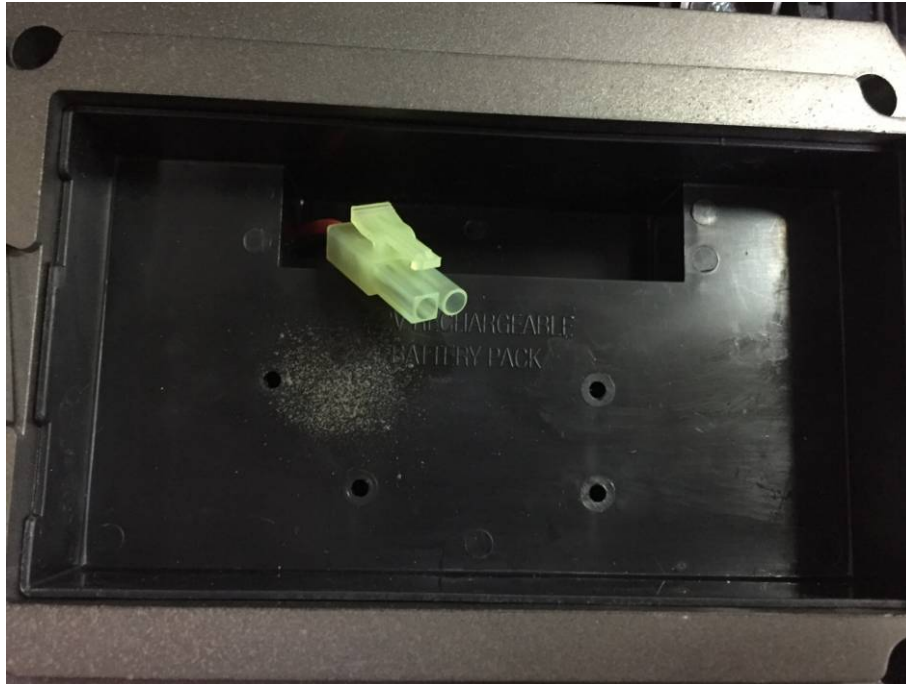
TRF No.: EN55014-1/2_b

27 of 25



Applicant: HOBBY ENGINE MODEL LTD.
Model: 0803

Internal Photo

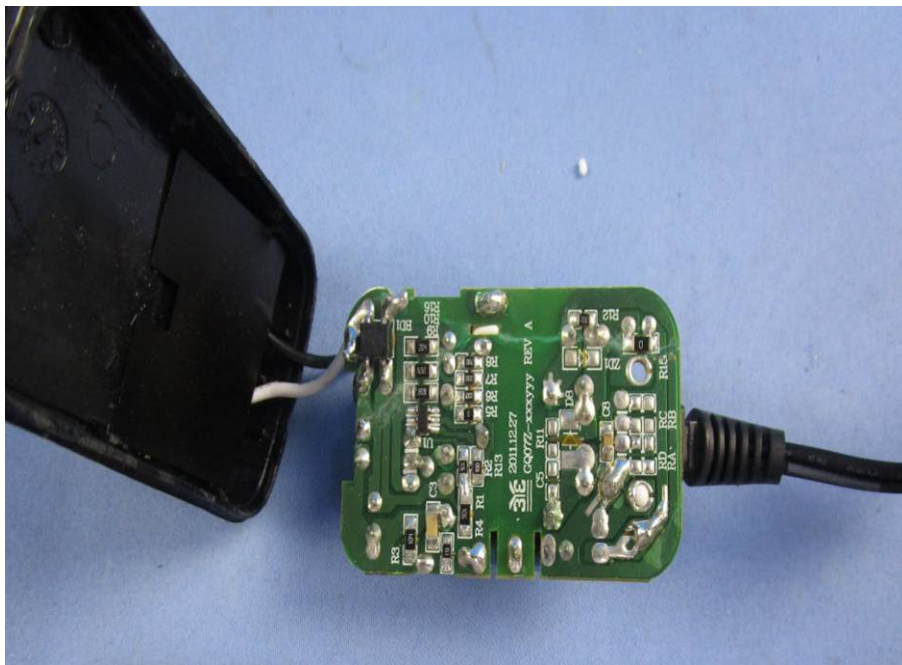
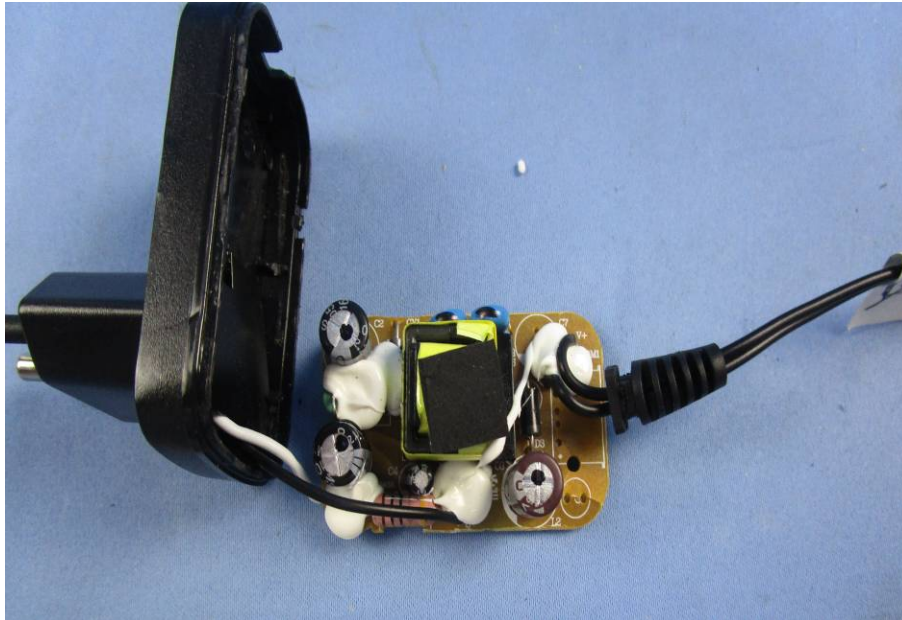


TRF No.: EN55014-1/2_b

Applicant: HOBBY ENGINE MODEL LTD.

Model: 0803

Internal Photo



--- END ---

TRF No.: EN55014-1/2_b