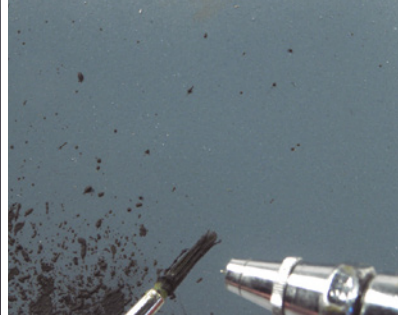




## AK 016 FRESH MUD

An enamel product to replicate natural fresh mud. Just apply to your tanks wheels, tracks and hull to achieve the most realistic effect. Also you can mix in plaster to give your mud volume.

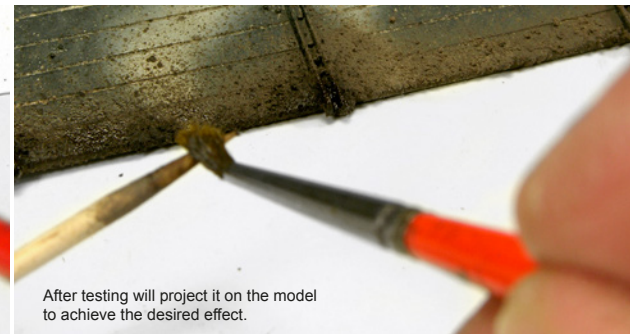


We apply the product directly from the jar on a well.

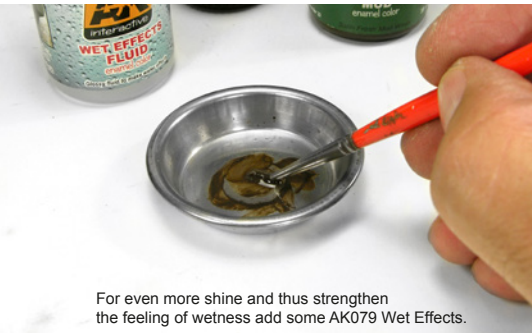


It is worth practicing on paper until you get the desired effect.

To obtain fresh mud use a smooth brush and a toothpick (you can also use the airbrush). Projecting the mixture to get the splash pattern.



After testing will project it on the model to achieve the desired effect.



For even more shine and thus strengthen the feeling of wetness add some AK079 Wet Effects.



Repeat the process with the new mix.



The final result.



Mixing AK016 Fresh Mud and AK078 Damp Earth with a little Plaster to add some more texture to the final result.

